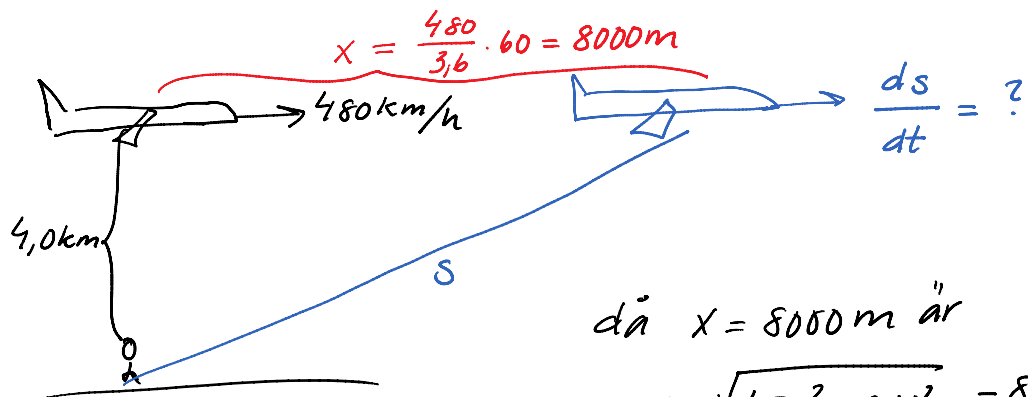


3021



$$s^2 = 4000^2 + x^2$$

Derivera V.L  $2s \cdot \frac{ds}{dt}$

Derivera H.L  $2x \cdot \frac{dx}{dt}$

sätt lika  $2s \frac{ds}{dt} = 2x \frac{dx}{dt}$

$$\frac{ds}{dt} = 2x \frac{dx}{dt} / 2s = 2 \cdot 8000 \cdot 133 / 2 \cdot 8944.27 = 119.25 \text{ m/s} = 430 \text{ km/h}$$