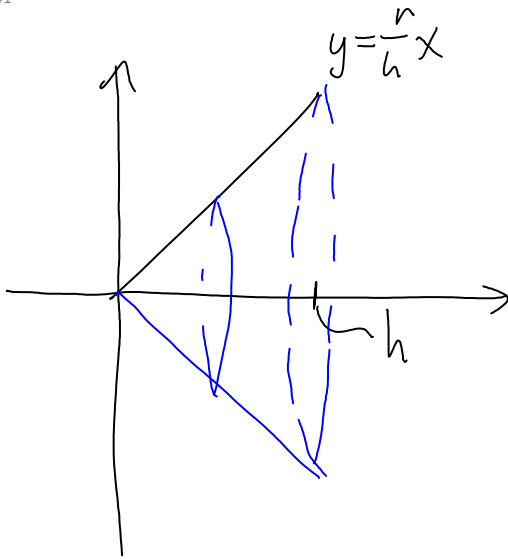


2061

den 7 april 2011
10:41



$$V = \int_0^h \pi \left(\frac{r}{h} x \right)^2 dx = \frac{\pi r^2}{h^2} \int_0^h x^2 dx = \frac{\pi r^2}{h^2} \cdot \left[\frac{x^3}{3} \right]_0^h =$$

$$= \frac{\pi r^2}{h^2} \cdot \frac{h^3}{3} = \frac{\pi r^2 h}{3}$$

⇒ 2