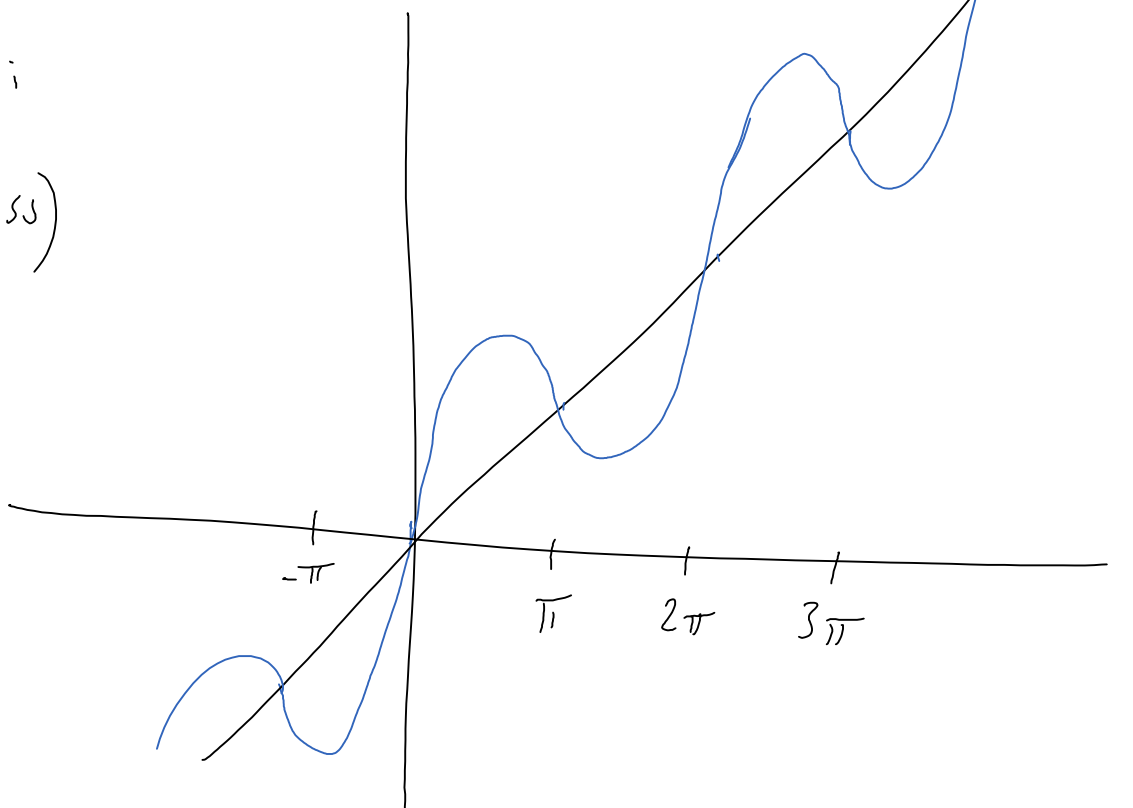


$$y_1 = \sin x + x, \quad y_2 = x$$

Grafer:

(principskiss)



$$y_1 = y_2 \quad \Rightarrow \quad \sin x + x = x \quad \Leftrightarrow \quad \sin x = 0$$

$$\Leftrightarrow \quad x = n\pi$$

Skärningspunkter $(n\pi, n\pi)$, n heltal.

C-uppgift?