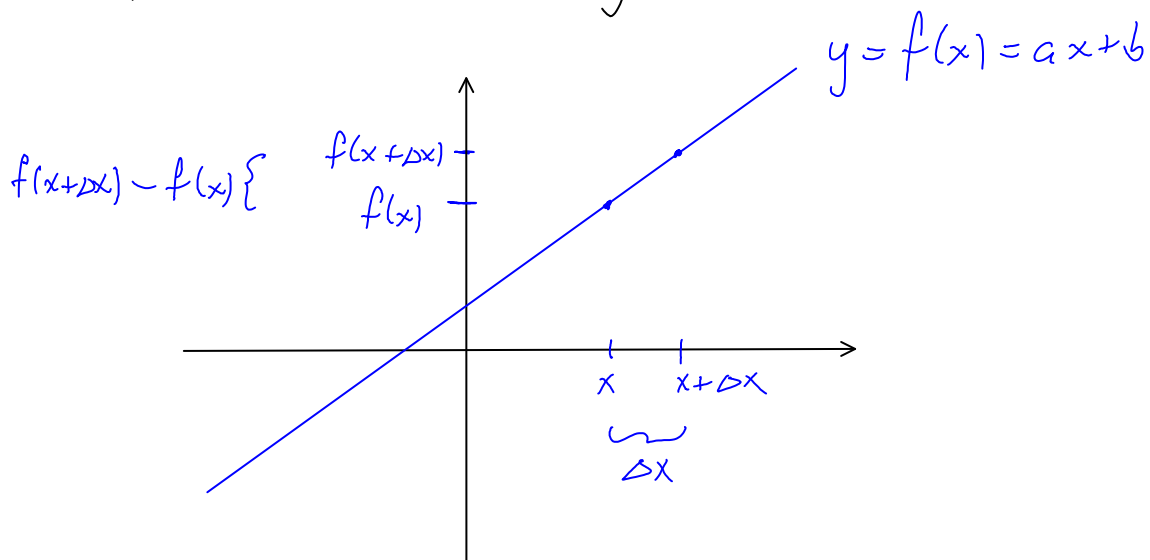


$$f(x) = ax + b$$

$$\frac{f(x+\Delta x) - f(x)}{\Delta x} = \frac{[a(x+\Delta x) + b] - [ax + b]}{\Delta x} =$$

$$= \frac{\cancel{ax} + a \cdot \Delta x + \cancel{b} - \cancel{ax} - \cancel{b}}{\Delta x} = \frac{a \cdot \Delta x}{\Delta x} = a$$

Geometrisk tolkning:



Vi har tydligt bestämt linjens lutning!